



The Albarregas Park concentrates one of the main natural reserves, where a powerful environmental axis is constituted, excluded by the growth of the city.

This development model involved building huge suture infrastructures of the territory, which allowed overflying the park corridor and connecting separate poles, but at the same time caused a risky under and increasingly stigmatized.

A movement of creators occupied the space below the viaduct, forced to move outside the hegemonic cultural circuit exhibited by the city. Urban activists, artists and restless, inhabiting in a seditious way the only place without apparent interests, an underground ecosystem despised by society.

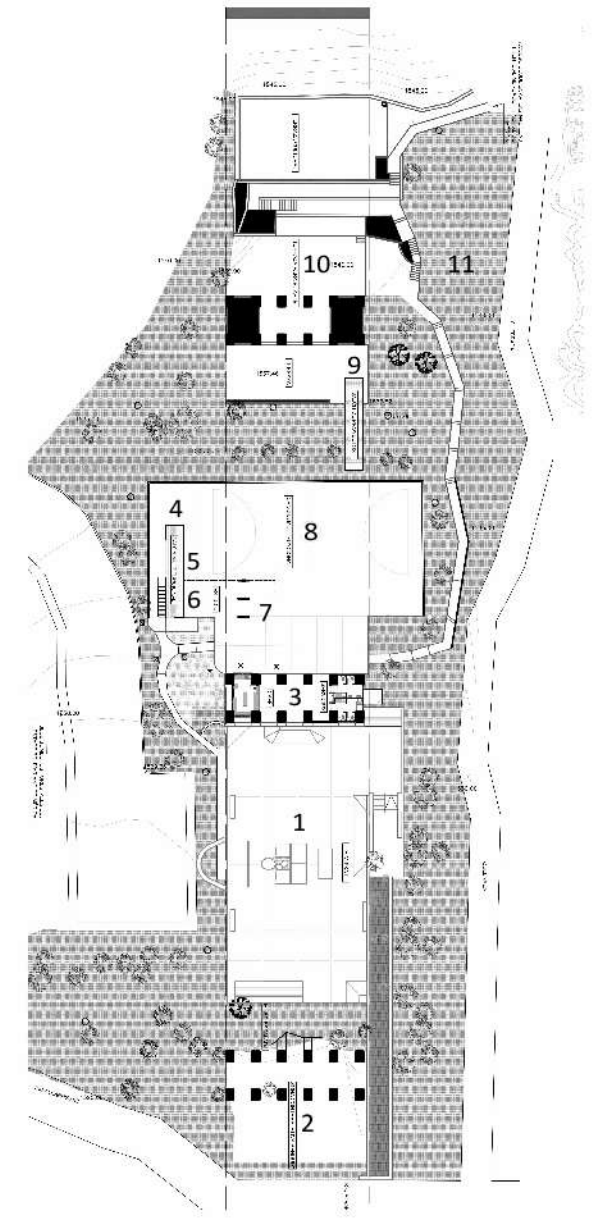
THE SPOT CULTURAL PARK

The Spot collective



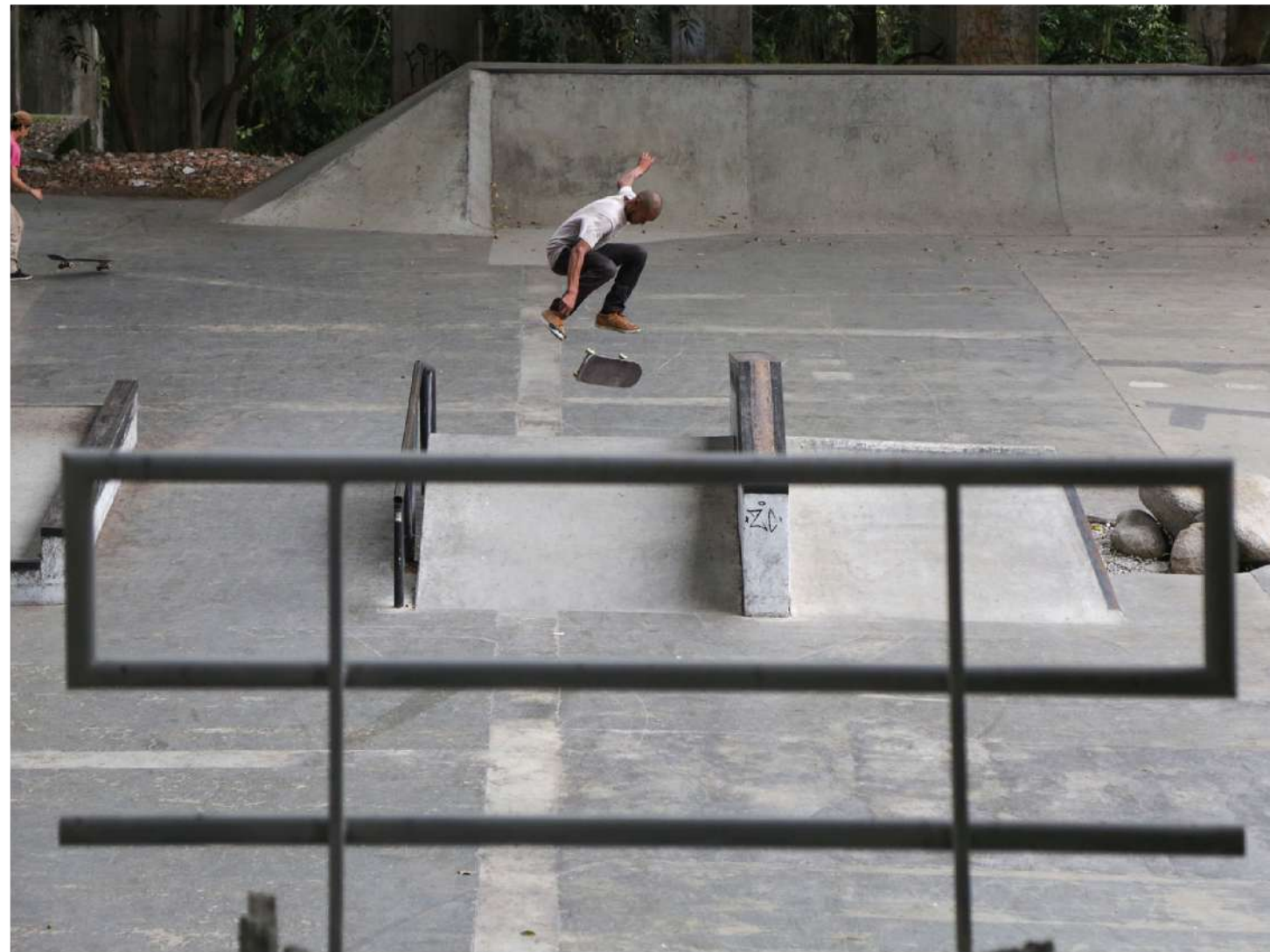
1. Skate plaza
2. Biking box
3. Coffe bar
4. Library
5. Playroom
6. Musical studio
7. Laboratory of image
8. Sport square
9. Coworking
10. Playground
11. Forest agriculture

The reconquest of the space places a transformation that unfolds different expressions within a marginalized landscape. A recondite space, recovered by social force through participatory work and self-construction.



THE SPOT CULTURAL PARK

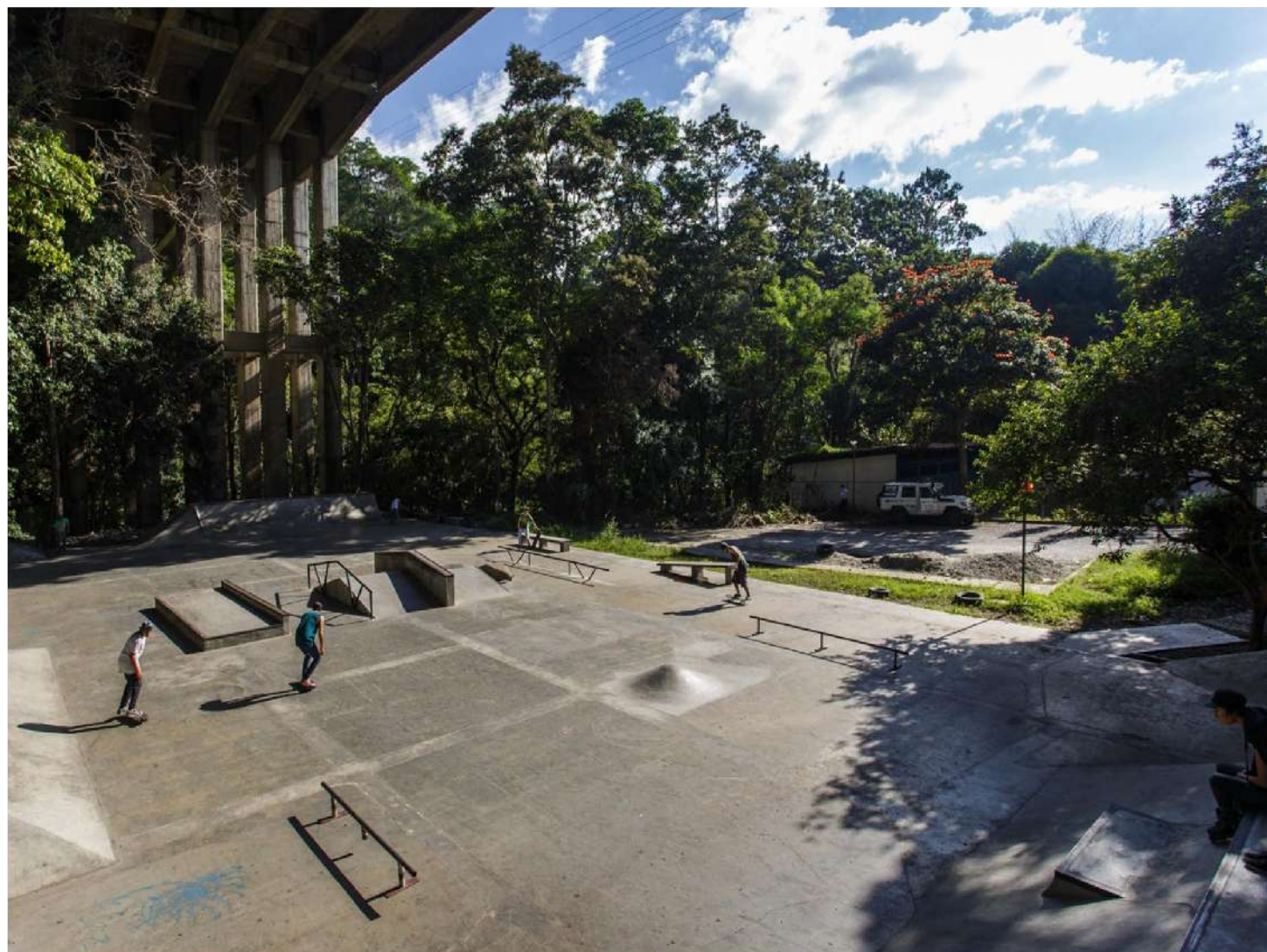
The Spot collective



All the intervention brings together a complex of cultural functions, where there is diversity and plurality of actors, around programs that have been growing progressively: modules of artistic production, music, film, agriculture, gastronomy and a series of other activities, around skate plaza, main detonator and park articulator space.

THE SPOT CULTURAL PARK

The Spot Collective



THE SPOT CULTURAL PARK

The Spot Collective